
MiTek[®]

SERVICE BULLETIN

Document ID:
SB275

Title:
**Updating Ranger RS Wiring for BLADE
Software 9.7.x**

Affected machinery: Ranger Lumber Retrieval System

Distribution: All customers with affected machinery

Applies to: All BLADE II saws with universal infeed decks provided with the Ranger RS

CAUTION:

MiTek recommends printing this document in high resolution using color ink. Many of the graphics may be unclear and may create an unsafe condition if this recommendation is not followed.

MiTek Automation
Phone: 800-523-3380
Fax: 636-328-9218
www.mitek-us.com

Part # and Rev.	SB275
Print Date	4 November 2024
Effectivity	All
Revision Date	
Revised By	
Orig. Release Date	10 October 2024
Created By	P. Hopper
Approved By	R. Tucker

Purpose and Scope

This service bulletin instructs how to remove wiring from the universal infeed electrical panel to prepare for BLADE software update 9.7.x used in the Ranger RS. This wiring is spliced into the universal infeed electrical panel via the Load Arm Board Cable (PN 509226).

Overview





Supplies Needed

- Phillips or flathead screwdriver

Lockout/Tagout Instructions

Electrical Lockout/Tagout Procedure

The lockout/tagout instructions for the electrical systems will be referenced as necessary in this document. Service bulletin instructions start on [page 3](#).

	 WARNING
	<p>ELECTROCUTION HAZARD.</p> <p>All electrical work must be performed by a qualified electrician.</p> <p>Verify that all power to the machine has been turned off and follow approved lockout/tagout safety procedures before performing any maintenance.</p> <p>If it is absolutely necessary to troubleshoot an energized machine, follow NFPA 70E for proper procedures and personal protective equipment.</p> <p>When the disconnect switch is off, there is still live power within the disconnect switch's enclosure. Always turn off the power at the building's power source to the equipment before opening this electrical enclosure.</p>

1. Engage an E-stop on the machine.
2. Turn the disconnect switch handle to the Off position. See [Figure 1](#).
3. Attach a lock and tag that meet OSHA requirements for lockout/tagout to the electrical service entry panel.
4. Open the door to the enclosure to the Ranger RS. Using a multimeter, verify that the power is off.


Figure 1: Disconnect Switch



Procedure

Removing Wiring from the Electrical Enclosure



	⚠ WARNING
	<p>MOVING PARTS CAN CRUSH AND CUT.</p> <p>Always verify that power to the machine has been turned off and follow approved lockout/tagout procedures.</p>

1. Lockout/tagout the electrical system of the machine using the [Lockout/Tagout Instructions on page 2](#).

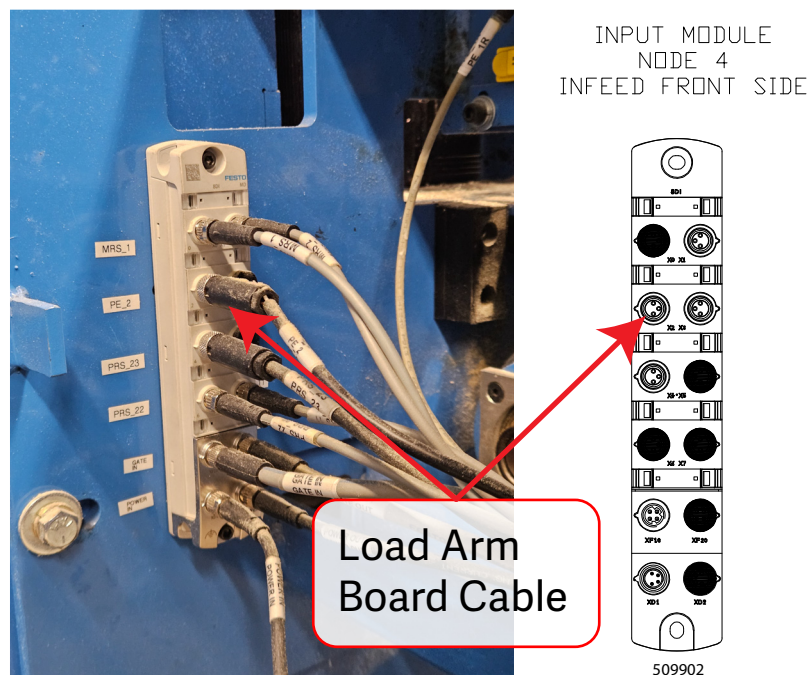
2. With power locked out as previously described, press the E-stop next to the infeed rail enclosure on the rear side of the infeed rail. Then open the panel. See [Figure 2](#)

Figure 2: Infeed Rail Enclosure



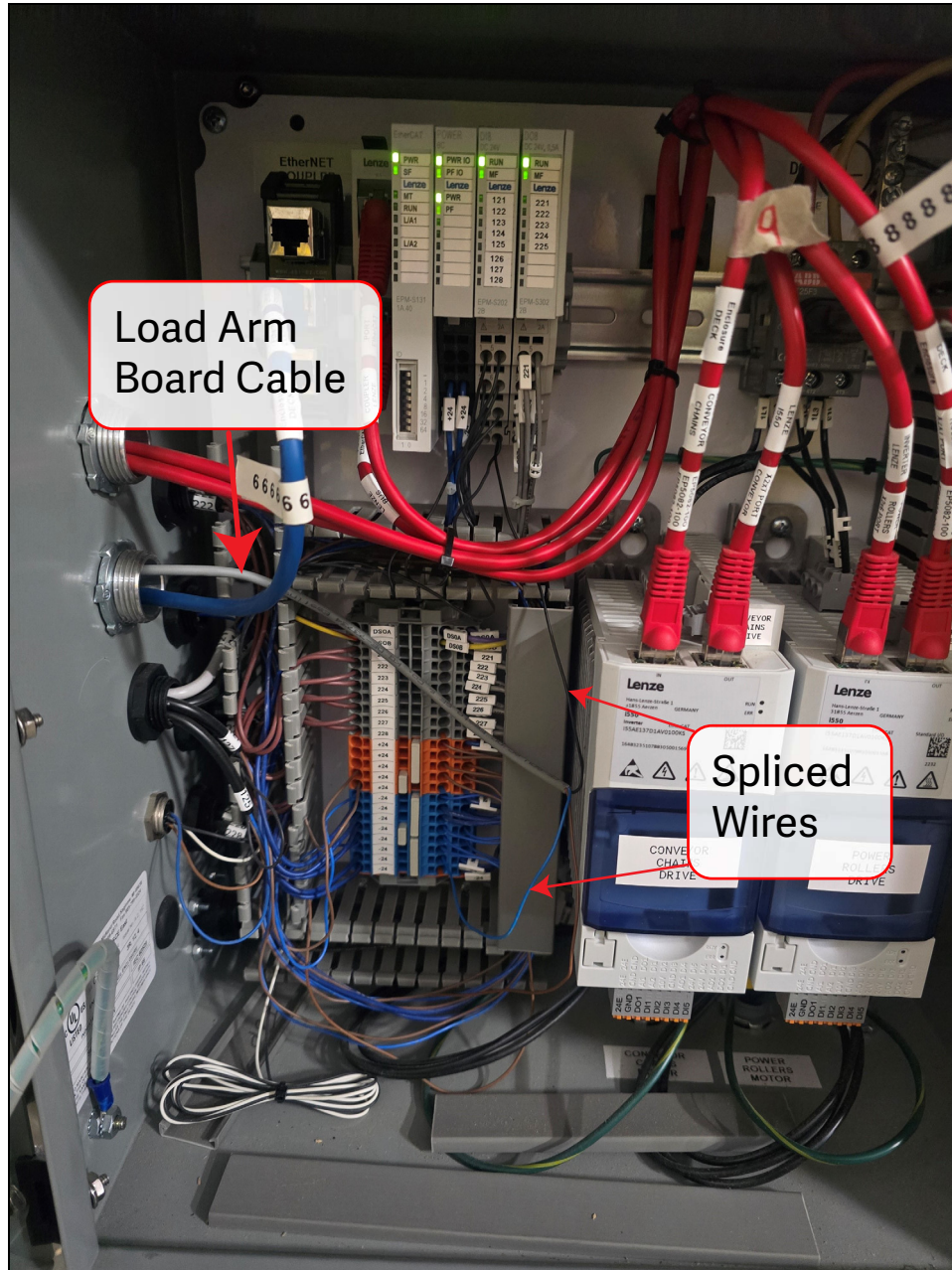
3. Disconnect the Load Arm Board Cable from the Festo I/O block's X2 connector. It is the first connector in the second row of the block. See [Figure 3](#).

Figure 3: Load Arm Board Cable Connector



4. Follow the cable to the universal deck electrical enclosure and locate where the two wires (1 blue, one black) have been spliced into the box. See [Figure 4](#).

Figure 4: Electrical Enclosure with Spliced Wires



5. Using a screwdriver, remove both the blue and black wires from the terminal blocks they are connected to.
6. Remove lockout/tagout devices.
7. Update the BLADE Software to version 9.7.x.
 - Contact MiTek Automation Support for assistance.

8. After the BLADE Software has successfully been updated, test your machine to ensure all operations are performed as normal.
 - If there are any errors with the machine operation, the BLADE Software version must be rolled back and the wiring reattached.
 - If no errors occur, remove and discard the two wires from the enclosure.

END OF SERVICE BULLETIN